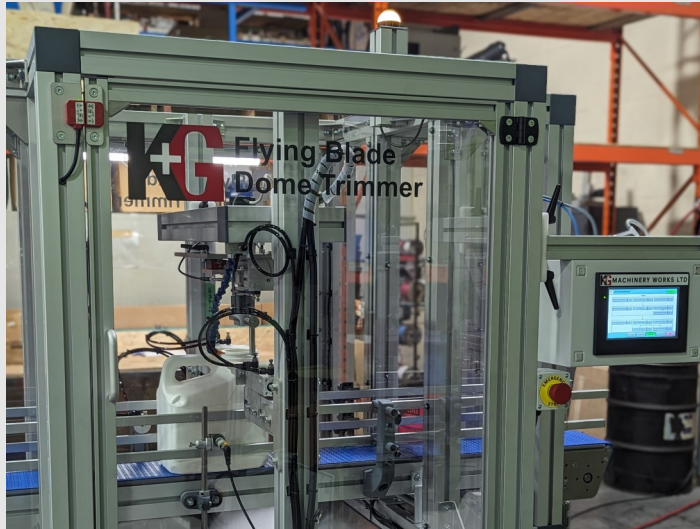




K+G MACHINERY WORKS LTD

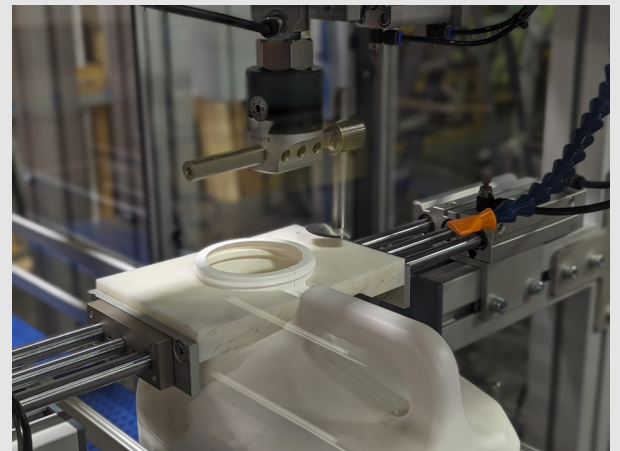
FLYING BLADE DOME TRIMMER



- Large and Offset Neck
- Maintains Orientation
- Neck Below Handle
- Scrap Collection Chute
- Compact Blades

The Flying Blade Dome Trimmer is uniquely designed to handle bottles with large and offset necks, ensuring a seamless and efficient trimming process. One of its key features is its ability to maintain bottle orientation, providing consistent performance regardless of the bottle's position. Moreover, it can still cut effectively even when the handle is positioned above the neck of the bottle.

But the features don't stop there. The Flying Blade Dome Trimmer also includes a Scrap Collection Chute for a clean and mess-free operation. Its compact blades are specially designed for bottle necks close to handles, ensuring a precise trim even in tight spaces. To enhance the bottle stability, an optional Vacuum Conveyor is available, making the clean-up process effortless. With the Flying Blade Dome Trimmer, you're investing in a tool that delivers both performance and convenience.



Specifications

Power Requirements: 1Ø 120VAC 10A

www.kgmachineworks.com

905.361.0605 | sales@kgmachineworks.com